

A Hall for All

Help support this exciting redevelopment project that will transform St Peter's Church Hall into the 21st century meeting place our community deserves.



Computer generated image of the new extension

To make a donation or for more information
pick up a leaflet from inside the church or visit our website
www.stpetershenleaze.org



A Hall for All

There is a pressing need to improve St Peter's Church Hall facilities to a standard which meets current expectations. The partial demolition at the east end and its replacement, together with other planned alterations, will achieve modern accommodation benefiting all hall users.

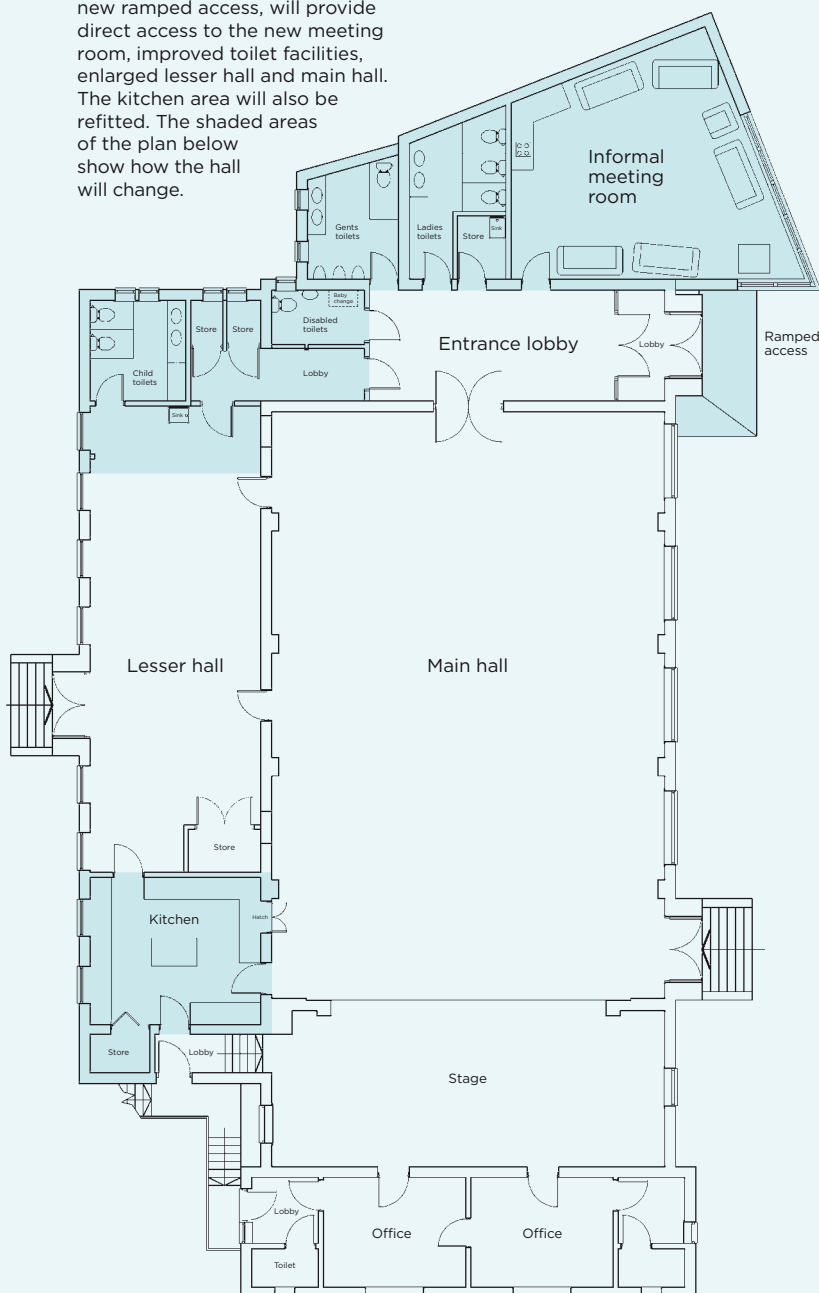
The new extension

The dramatic roof apex, timber boarded wall and large glazed section provide an attractive visual contrast to the traditional external appearance of the main church hall.



The new layout

The entrance lobby, with its new ramped access, will provide direct access to the new meeting room, improved toilet facilities, enlarged lesser hall and main hall. The kitchen area will also be refitted. The shaded areas of the plan below show how the hall will change.



The improvements

Integral to the "A Hall for All" project is the improved configuration of the entrance lobby which will provide direct separate access to the lesser hall, the main hall, the improved toilets and the new informal meeting room.

The new meeting room will be 20 per cent larger than the present club room, and with its large window area will provide comfortable light and airy meeting space suitable for groups of up to 20 people.

The lesser hall will be slightly enlarged at its eastern end, and its sound-proofing will be improved. New storage facilities will be provided.

Refitting of the kitchen will enable full catering of meals for up to 100. A catering size dishwasher is included.

Toilet facilities will be rebuilt and modernised including an accessible toilet for the disabled.

The cost

The cost of providing "A Hall for All" is expected to be in the region of £350,000. We already have £50,000 but need the balance to complete it.

How we will raise the money

We will be promoting a variety of fundraising activities during 2010. We are also inviting personal donations from all those connected with St Peter's and from those who belong, or have previously belonged, to organisations that meet in the present hall.

"This is an exciting and important project for the future of St Peter's, Henleaze. With your help we can make it happen, ensuring that our hall truly remains 'A Hall for All' now, and for generations to come. Thank you for your support."

The Rev Canon Mark Pilgrim
Vicar, St Peter's Henleaze

To make a donation or for more information pick up a leaflet from inside the church or visit our website www.stpetershenleaze.org

